

CERTIFICATE OF LOCATION OF GOVERNMENT CORNER

NORTH QUARTER Corner of Section 12, Township 108, Range 42, 5TH P.M.

STATE OF MINNESOTA, County of MURRAY

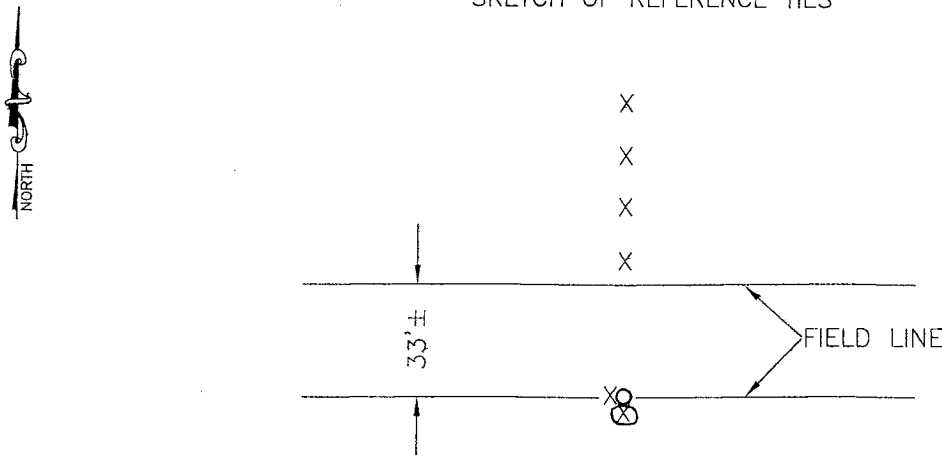
At the corner location shown on the sketch:

On 07-12-2010 found a 12" POINTED FIELD STONE
DATE

left monument as found, lowered monument, removed monument (explain)

On _____ placed a _____
DATE

SKETCH OF REFERENCE TIES



Minnesota State Plane Coordinate
System Murray County Datum
NAD83 (1996)

N: 221655.515
E: 482464.447

Statement of evidence relative to this corner location is on back of page.

I hereby certify that this document and the data contained herein was prepared by me or under my direct supervision.

David B. ... 1/12/11
SIGNATURE DATE

Registration No. 43844

Land Surveyor, Professional Engineer
 County Surveyor, County Engineer

OFFICE OF THE COUNTY RECORDER
County of _____

I hereby certify that this document was filed in the Co. Recorders office at _____ .M on the _____ day of JAN 18 2011 A.D. 20 _____

County Recorder *James V. Johnson*
By _____, Deputy

DOCUMENT NO. _____

Statement of Evidence

In 1861, L.G.W. Fletcher did the original subdivision of the township.

In October, 1915, J.R. Johnston, the County Surveyor, found a stone at the corner.

On July 12, 2010, Bueltel-Moseng Land Surveying found a 12" pointed field stone next to an old wooden fence post on the south edge of a 33' grass strip and in line with the fence to the north. We set a 5/8" iron with seal #43844 on the east and west sides of the stone and chiseled an "X" in the stone. We also set a steel fence post with a yellow survey tube 1" south of the stone.